

## CHAMPIONNAT DE FRANCE DES CLUBS 2023- 2024



### N1 HOMMES - N1 DAMES

	DATE	LIEU	MACHINE	PISTES	HUILE	HUILAGE
J1 Hommes	14-15 oct	MISEREY-SALINES Besançon	IKON WALKER	AMF	FIRE	BANK 40 médium 39-42 KEGEL ARSENIC 50µL 41
J1 Dames						BANK 40 médium 39-42 KEGEL S - Sphinx 40



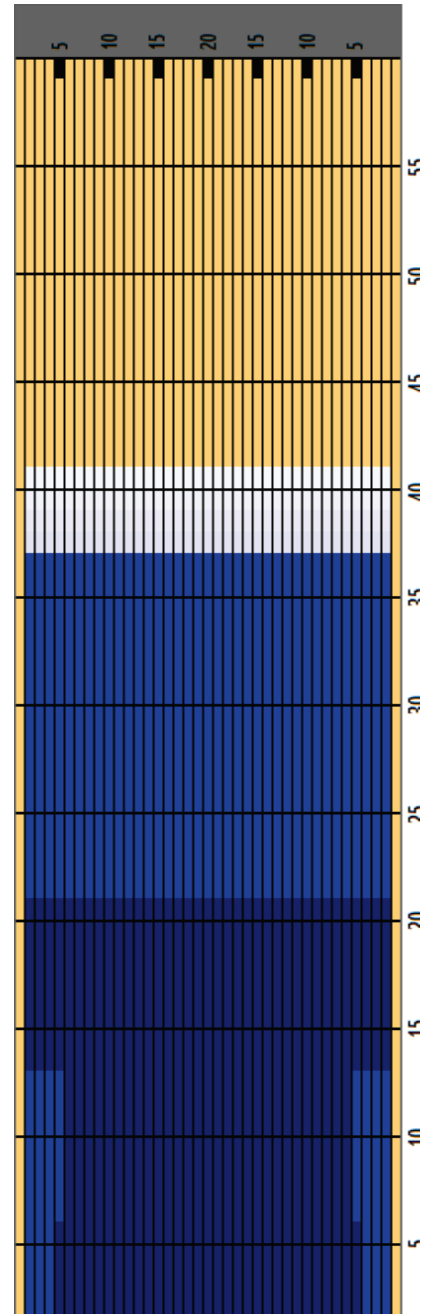
# ARSENIC 50 $\mu$ L



Oil Pattern Distance **41** Reverse Brush Drop **41** Oil Per Board **50 ul**  
 Forward Oil Total **19.9 mL** Reverse Oil Total **11.55 mL** Volume Oil Total **31.45 mL**

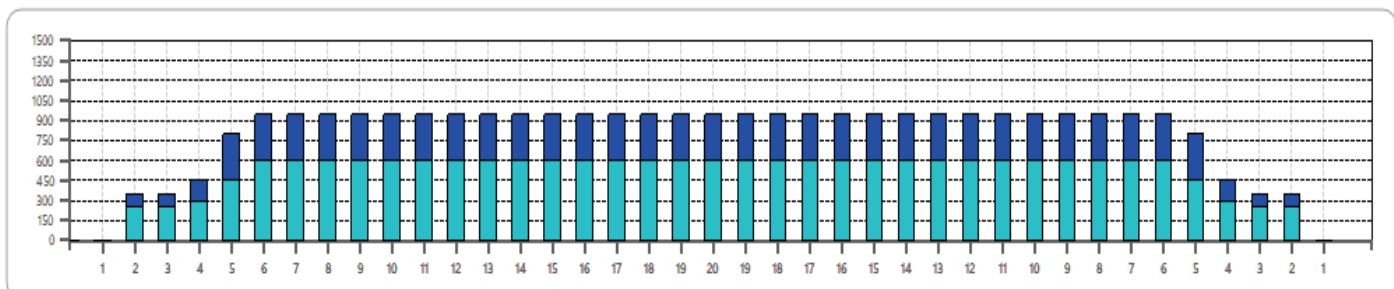
	START	STOP	LOADS	SPEED	CROSSED	START	END	FEET	T.OIL
1	4L	4R	1	14	33	0.00	0.00	0.00	1650
2	5L	5R	2	14	62	0.00	3.90	3.90	3100
3	5L	5R	1	18	31	3.90	6.40	2.50	1550
4	6L	6R	3	18	87	6.40	14.00	7.60	4350
5	2L	2R	5	10	185	14.00	21.00	7.00	9250
6	2L	2R	0	18	0	21.00	41.00	20.00	0

	START	STOP	LOADS	SPEED	CROSSED	START	END	FEET	T.OIL
1	2L	2R	0	30	0	41.00	37.00	-4.00	0
2	2L	2R	1	26	37	37.00	33.40	-3.60	1850
3	2L	2R	1	26	37	33.40	29.80	-3.60	1850
4	5L	5R	4	26	124	29.80	15.10	-14.70	6200
5	4L	4R	1	26	33	15.10	11.50	-3.60	1650
6	2L	2R	0	22	0	11.50	4.00	-7.50	0
7	2L	2R	0	14	0	4.00	0.00	-4.00	0



Item	3L-7L:18L-18R	8L-12L:18L-18R	13L-17L:18L-18R	18L-18R:17R-13R	18L-18R:12R-8R	18L-18R:7R-3R
Description	Outside:Middle	Middle:Middle	Inside:Middle	Middle:Inside	Middle:Middle	Middle:Outside
Track Zone Ratio	1.36	1	1	1	1	1.36

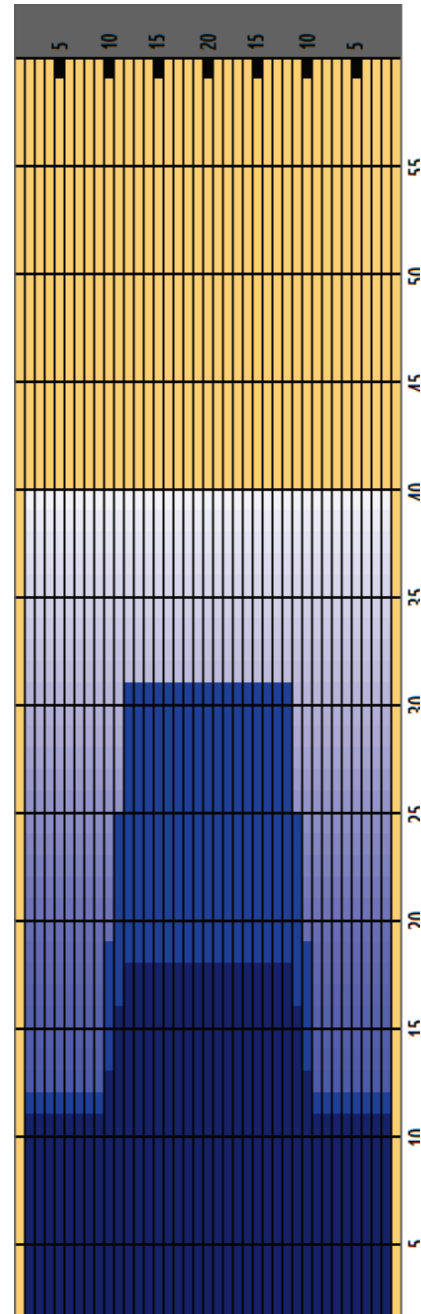
Forward Reverse



Oil Pattern Distance **40** Reverse Brush Drop **40** Oil Per Board **50 ul**  
 Forward Oil Total **15.8 mL** Reverse Oil Total **9.4 mL** Volume Oil Total **25.2 mL**

	START	STOP	LOADS	SPEED	CROSSED	START	END	FEET	T.OIL
1	2L	2R	7	14	259	0.00	11.90	11.90	12950
2	10L	10R	1	14	21	11.90	13.80	1.90	1050
3	11L	11R	1	18	19	13.80	16.30	2.50	950
4	12L	12R	1	18	17	16.30	18.80	2.50	850
5	2L	2R	0	18	0	18.80	30.00	11.20	0
6	2L	2R	0	30	0	30.00	40.00	10.00	0

	START	STOP	LOADS	SPEED	CROSSED	START	END	FEET	T.OIL
1	2L	2R	0	30	0	40.00	31.00	-9.00	0
2	12L	12R	2	22	34	31.00	24.80	-6.20	1700
3	11L	11R	2	22	38	24.80	18.60	-6.20	1900
4	10L	10R	2	22	42	18.60	12.40	-6.20	2100
5	2L	2R	2	14	74	12.40	8.50	-3.90	3700
6	2L	2R	0	14	0	8.50	0.00	-8.50	0



Item	3L-7L:18L-18R	8L-12L:18L-18R	13L-17L:18L-18R	18L-18R:17R-13R	18L-18R:12R-8R	18L-18R:7R-3R
Description	Outside:Middle	Middle:Middle	Inside:Middle	Middle:Inside	Middle:Middle	Middle:Outside
Track Zone Ratio	2	1.43	1	1	1.43	2

Forward Reverse

